

# An American Excursion

An experience your group will never forget!

**EXCLUSIVE  
GROUP PACKAGE  
PRICE**

(20 guests or more)

**\$47** per person

includes admission to the National Constitution Center and lunch on the Moshulu

Discounted group rates available for Tour Operators

## National Constitution Center

You'll be engaged, inspired and delighted by America's first and only museum devoted to the U.S. Constitution!

Our 3 Signature Attractions:

- **The Story of We the People**  
The Center's groundbreaking, hands-on Main Exhibition guides your group through milestones in our nation's constitutional history.
- **Freedom Rising**  
This stirring, multimedia theatrical production brings the Constitution to life from 1787 to the present.
- **Signers' Hall**  
Our iconic attraction features 42 life-size bronze statues of the Founding Fathers present at the Constitution's signing on September 17, 1787.

For more information or to book a group, contact 215.409.6800 or [groupsales@constitutioncenter.org](mailto:groupsales@constitutioncenter.org).

Ask about the Center's blockbuster Feature Exhibitions! (see reverse side for details)

NATIONAL CONSTITUTION CENTER



525 Arch Street, Independence Mall  
Philadelphia, PA 19106  
[www.constitutioncenter.org](http://www.constitutioncenter.org)



401 S. Columbus Blvd.  
Philadelphia, PA 19106  
[www.moshulu.com](http://www.moshulu.com)

## Moshulu Restaurant

The Moshulu is the World's Oldest and Largest 4- Masted Tall Ship Still Afloat. Her private dining rooms for parties of 15 to 400, adventuresome American cuisine, and her unsurpassed views have earned her the AAA Prestigious 4-Diamond Award from 2005-2011. The Moshulu is 107 Years old, 397 feet long with masts towering 220 feet above her Chart House deck; which makes her one of the most unique venues in the world. She has several private rooms for parties from 15 to 400 guests.

- Open daily for lunch and dinner
- 3-course sit-down menus
- Complimentary onsite motor-coach parking
- Special history presentation
- Ask about our entertainment packages

For more information or to book a group contact Diane Meglino [dmeaglino@moshulu.com](mailto:dmeaglino@moshulu.com) or call 215.923.2500 x1010

**MOSHULU**  
CAFÉ • RESTAURANT • BAR



## **Moshulu Group Tour Lunch Menu**

### **Choose One Salad**

#### **California Hearts of Romaine**

Roasted Garlic, Parmesan Croustade,  
Caesar Dressing

#### **Mixed Seasonal Organic Greens**

Sweet Grape Tomatoes, Candied Almonds,  
Honey Dijon Vinaigrette

### **Entrée – Select up to 3**

#### **Pre-counts Required**

#### **Chef's Choice of Starch and Vegetables**

Free Range Chicken Breast

Lump Crab Cake

Pan Roasted Tilapia

Slow Roasted Pork Tenderloin

Roasted Scottish Salmon (Additional \$2)

Grilled Filet Mignon (Additional \$6)

### **Entrée Duets (No Pre-Count Needed)**

#### **Chef's Choice of Starch and Vegetables**

Chicken Medallion and Petite Shrimp

4oz Filet and 2oz Crab Cake (Additional \$6)

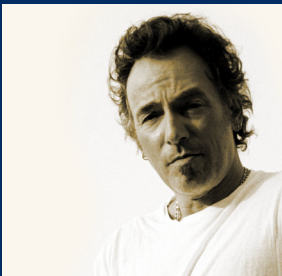
### **Dessert**

#### **Three Piece Tasting**

#### **Chef's Selection**

Coffee, Tea and Iced Tea

## **COMING SOON TO THE NATIONAL CONSTITUTION CENTER**



### **Asbury Park To The Promised Land: The Life And Music Of Bruce Springsteen**

**FEBRUARY 17 – SEPTEMBER 3, 2012**

Add \$6 to your ticket



### **Prohibition**

**OCTOBER 19, 2012 – APRIL 30, 2013**

Add \$3 to your ticket